



Ornella Muti
in
BEETHOVEN'S SOUL
Theatre & Music Reading

based on the epistolary legacy
of Beethoven and Goethe.

Musical accompaniment -
compositions by
Ludwig W. Beethoven.

BEETHOVEN'S SOUL

is a unique theatrical and musical production that tells about the fascinating creative relationship between the composer Ludwig van Beethoven and the writer Johann Wolfgang von Goethe.

The action takes place in the historical context of the era of romanticism, when both artists were at the peak of their creative power.






The performance begins with a bright
musical fragment from the famous
compositions
of Ludwig van Beethoven.

The lights on the stage go out, and
the voice begins to acquaint the
viewer with a fascinating
correspondence between two brilliant
people - Ludwig van Beethoven and
Johann Wolfgang von Goethe.

The entire production
is an intimate look at the complex
personalities and artistic passions
of two geniuses.



The performance program includes
the famous compositions
of Beethoven brilliantly performed
by a musical trio:
piano, clarinet and cello.



THE MAIN PERFORMER
OF THE PLAY
ORNELLA MUTI

- through reading epistolary correspondence reveals the deep artistic and intellectual closeness between the two geniuses.

The letters of the two geniuses contain themes of struggle, pain, celebration and the search for truth.

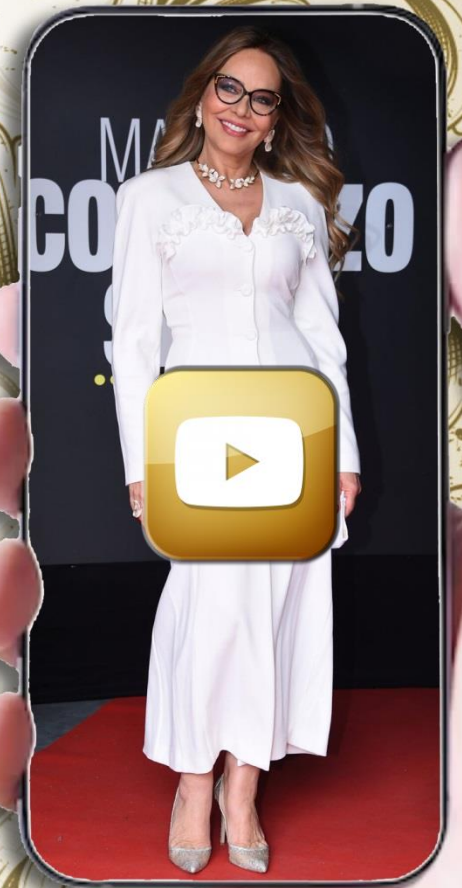
The words of the two artists create a canvas of emotions that intertwine with the brilliant music of Beethoven and form a deep emotional atmosphere for the viewer.



BEETHOVEN'S SOUL

is a performance dedicated
to the extraordinary lives and
incredible works of two of the most
important figures
in European art and culture.
On the stage we see the union of
music, theater and passion.

The unique
Ornella Muti
conveys, along with reading letters,
all the emotions and secret
revelations that the characters
expressed through
the literary style.



The works by the great composer
Ludwig van Beethoven
will be performed live on stage by a musical trio
(piano, clarinet and cello).

PROGRAM

Trio in Slb Magg. Op.11
Allegro co brio
Adagio

Allegretto, tema con variazioni
Trio in Mib Magg. Op. 38
Adagio, Allegro,
Adagio cantabile, menuet, Trio
Scherzo: Allegro Vovace,
Andante con moto,
Alla Marcia, Presto

CONTACTS

Renaissance & Teatro Sul Lago Group
P.O.BOX 4415 - 6904
Lugano, Switzerland

production@teatrosullago.net
media@teatrosullago.net
www.teatrosullago.net
www.julia-entertainment.com

